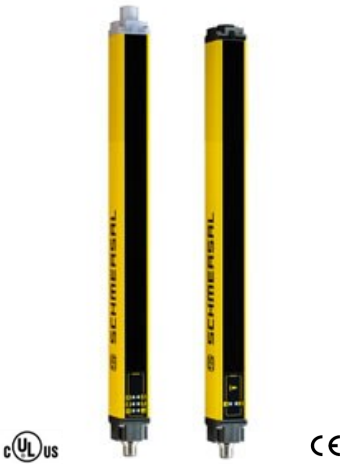
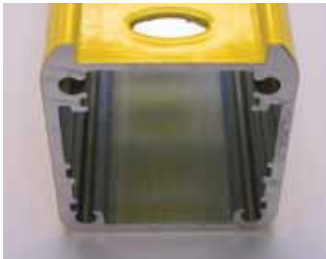


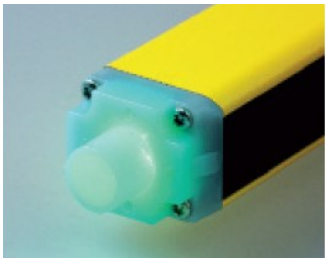
SLC440 Multifunctional Safety Light Curtains



Features



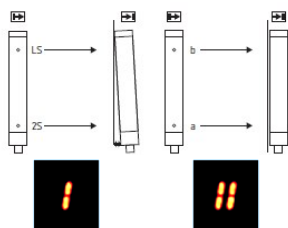
Rugged closed housing profile



Output status LED endcap



7 segment & LED display



Alignment aid display

Overview

Schmersal's SLC440 Series are Type 4 Safety Light Curtains that incorporate a full range of common and unique application functions which are completely configurable without the need of a special tool or software.

The SLC/ SLG 440 series offers numerous functions as standard features: fixed blanking, floating blanking, fixed blanking with movable edge region, double reset, contactor control (EDM), automatic mode, re-start mode, and beam coding. Set up is simplified as selection and configuration of these functions are made via a single push-button and the 7-segment display. After completion, the selections are stored in the system. This user-friendly method does not require separate software or costly set-up devices.

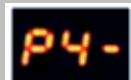
Installation of the emitter and receiver units is made easier with the integrated alignment aid. This function tests the first and last beams for alignment and displays the results on the 7-segment display. Once both are situated properly, the display can be changed over to show signal strength, to allow for fine tuning the alignment.

Operating status is clear and can be seen from a distance. The end cap of the receiver unit is molded from a semitransparent plastic that is illuminated by LED. It shows green for proper operation and red for a fault. Also, the 7-segment display which was so helpful in set up, now displays error codes and flashing signals to report specific faults and problems.

The SLC440 series features a one-piece extruded reinforced housing in a compact 28 mm x 33 mm rectangular profile. This housing profile has proven to be less susceptible to mechanical damage and misalignment from torsion or bending.

Safety light curtains SLC 440 are used for the protection of hazardous areas, and are available with resolutions of 14 or 30 mm and protection field heights between 170 and 1770 mm. The series is suited for use in safety circuits up to PLe (EN 13849) or SIL3 (IEC 61508).

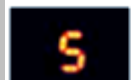
Parameter Setting example



Contactor control not active
 ■ Press pushbutton 3x to reach Program 4
 ■ "P4-" indicates Program 4 (EDM) is inactive



Contactor control active
 ■ Push and hold pushbutton to change setting
 ■ "P4A" indicates Program 4 is active



Save new configuration
 ■ Press pushbutton 3x to reach the Save function
 ■ Push and hold pushbutton to save the configuration.

Contactor control function available
 ■ Reconnect SLC/SLG440 back to the safety system

Applications

- Power-driven machines
- Power presses for the metal and plastics industry
- Folding or brake presses
- Filter presses
- Punching machines
- Robot cells
- Welding booths
- Printing machines
- Injection molding
- Materials handling and storage technology
- Palletizers
- Packaging equipment

Available Literature



Optoelectronic Devices

Ordering Details

SLC440-E/R①-②-01

① Protection Height: (mm)

0170	0250	0330	0410
0490	0570	0650	0730
0810	0890	0970	1050
1130	1210	1290	1370
1450	1530	1610	1690
1770	1850	1930	

Bold heights are regularly stocked for 30mm resolution

② Resolution: (mm)

14	with range: 0.3 m to 7 m
30	with range: 0.3 m to 10 m

Mounting hardware included

Accessories

Connector cables

KA-0804	5 m cable for emitter
KA-0805	10 m cable for emitter
KA-0808	20 m cable for emitter

KA-0904	5 m cable for receiver
KA-0905	10 m cable for receiver
KA-0908	20 m cable for receiver

KA-0974	Programming cable with pushbutton
----------------	-----------------------------------

Mounting

MS-1100	Mounting kit
MS-1110	Center support
MSD5	Spacers

Deflection mirrors

ULS-M-0200	200 mm height
ULS-M-0350	350 mm height
ULS-M-0500	500 mm height
ULS-M-0650	650 mm height
ULS-M-0800	800 mm height
ULS-M-0950	950 mm height
ULS-M-1250	1250 mm height
ULS-M-1550	1550 mm height
ULS-M-1700	1700 mm height

Compatible Safety Controllers

SRB-E-201LC	SRB-E-322ST
SRB-E-201ST	SRB-E-402ST
SRB-E-301ST	SRB-301MC
SRB-E-212ST	

Bold part numbers are regularly stocked

Contact

Schmersal USA
 15 Skyline Drive
 Hawthorne, NY 10532

Tel: 914-347-4775
 Fax: 914-347-1567
 E-mail: salesusa@schmersal.com

Schmersal Canada
 15 Regan Road, Unit # 3
 Brampton, ON L7A 1E3

Tel: 905-495-7540
 Fax: 905-495-7543
 E-Mail: salescanada@schmersal.com