



Industrial NEMA Solutions



STÖBER

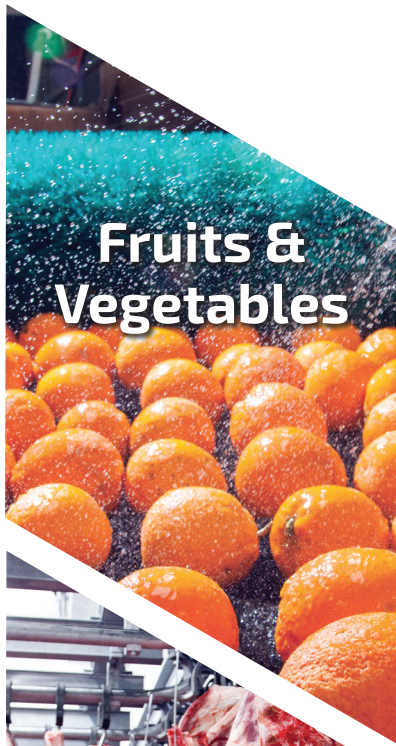
Solutions for Your Industry

STOBER can handle whatever your industry requires. From a three-year warranty to no maintenance, choose STOBER.

Because every application is critical to your operation.



Beverage



**Fruits &
Vegetables**



Chemical



Meat



Dairy



**Material
Handling**



**Heavy
Industry**



Bakery

Our Three Pillars

STOBER is your **trusted partner** in providing the ultimate customer experience. From unsurpassed quality to rapid response support to fast delivery, we are the **gold standard** for gearboxes.



Quality

3 Year Warranty



Delivery

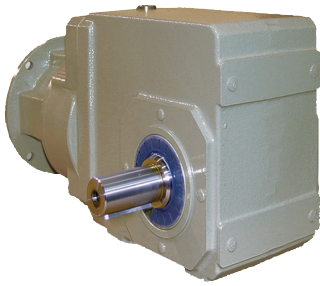
Build & Ship in 1 Day



Service

24/7, 365

The World's Toughest Gearbox



- **Precision gearing** – all gears are ground after hardening to minimize wear and metal particles
- **Sealed for life** – long-life input seals, dual output seals, no breathers, vents, or bladders keep oil in and contaminants out
- **Durability** – one-piece housing for structural rigidity
- **No water ingress** – O-ring on input to prevent water from entering gearbox

No oil leaks!

Superior Parts

SKF



SKF bearings eliminate premature failure

FREUDENBERG
INNOVATING TOGETHER



Freudenberg seals withstand harsh environments

Mobil
Industrial Lubricants



Exxon Mobil Lubricants prevent seal blow-out

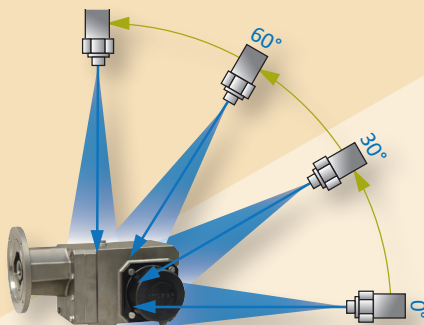
IP69K Certified to Prevent Water and Dust Ingress

Our products are put through an absolute worst-case washdown to make sure they can handle your toughest applications. This is the highest protection rating available. The test includes spraying units with:

- 176° F water
- 1,450 PSI
- 10-15 cm from the reducer
- Rotated once every 12 seconds

The results:

- No paint flaked off and there was NO water ingress to the reducer
- The unit continued to run during and after the test



TRIALON		TEST REPORT	
Innovative engineering quality testing global service		Test ID #: 23712	Page: 1 of 3
		PCN: 88402	Date: 2/21/2010
Client: Adam Propp Supplier: Duffin Inc. 1781 Downing Drive Memphis, TN 38105 908-739-3000 Test Item: Gear Housing Rev. Date: 4/20/2009 Qty: 1 Condition on Receipt: No visual anomalies noted			
Test Specification: per ASTM D4084, Test Method D4084-09a, Test Method D4084-09a		Revision: 1/1/10	
Test Summary: The test was performed on the above specification. The sample was tested inside of a test chamber containing a mixture of 50% by weight of Potassium Chloride and 50% by weight of water. The test was repeated for 8 hours and 12 minutes for a total of 20 cycles.			
Test Summary: Gear Housing Rev. Date: 4/20/2009 Test Item: Gear Housing Rev. Date: 4/20/2009 Test Item: Gear Housing Rev. Date: 4/20/2009 Test Item: Gear Housing Rev. Date: 4/20/2009			
Test Results:		Calibration Due:	
High Pressure Pump		10/11/10	02/28/10
Pressure Gauge		02/28/10	02/28/10
March Machine Pressure Gauge		02/28/10	02/28/10
Test Software: The software was used as required. Test Results: The test was passed. Parts were used back in customer for evaluation. No visible photographs of sample mounting.			
Prepared By: John J. Cullen Test Engineer Engineering		Approved By: [Signature] Test Engineer Laboratory Manager	
ISO/IEC 17025 Accredited Laboratory		Reliability Technical Center 1115 Tandy Plaza Raleigh, NC 27601 Tel: (765) 459-8500 Fax: (765) 459-8482 www.trialon.com	

All of this adds up to a 3 year warranty.

Designed With You In Mind.

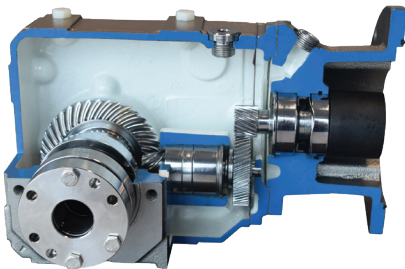
Having Trouble Removing Your Motor from Your Gearbox?

Installation and removal of the gearbox is often the most difficult part of your purchase. STOBBER gear reducers are designed for easy installation of the gear reducer, motor coupling, and removal.

No hammers, torches, or crowbars are needed.



The STOBBER Difference



Motor Mounting:

- Easy blind installation with four bolts for motor adapter
- Input coupling eliminates possibility of motor seizing to gearbox and misalignment
- No metal-to-metal contact between motor and gearbox means no fretting

Gear Reducer Installation:

- Input coupling hub and sleeve for quick installation line-up
- Reduce maintenance and maintain equipment around gearbox as easily as possible.
- Any horizontal mounting prevents potential failures due to incorrect mounting position

Removal:

- Bushing system eliminates gearbox seizing to conveyor shaft
- No more stuck gearboxes!

The Least Expensive Gearbox You'll Ever Own

Owning a gearbox involves more than just the purchase price. From maintenance requirements to inventory to efficiency to more, the true price of a gearbox is stretched over its life.

What does STOBER bring?



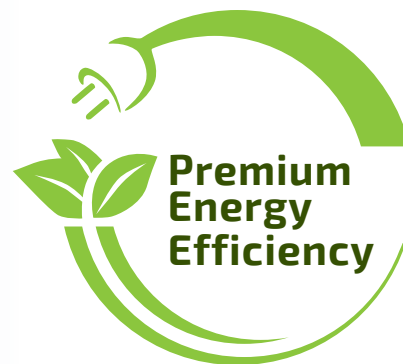
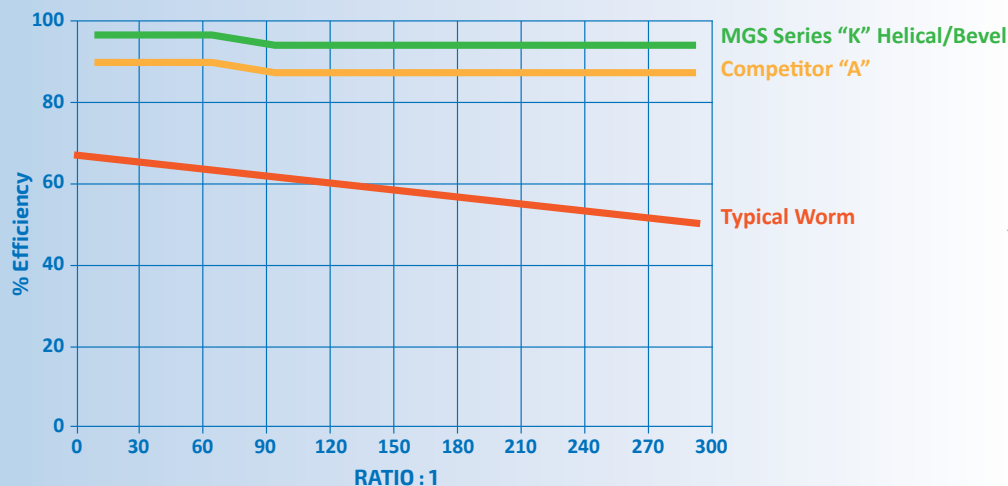
No Maintenance.
STOBER gear reducers are lubricated for life



Guaranteed not to leak. Eliminate your drip pans.

97% energy efficiency: For every \$1 of energy you put into the reducer, you get \$0.97 of energy out.

Efficiency Comparison



The Least Expensive Gearbox You'll Ever Own

Additional STOBER Advantages:



- Storeroom Optimization – free up cash flow by reducing inventory



- Quick Delivery – build and ship in one day



- Emergency Builds – no expediting fees



- 24/7, 365 Support – real people all the time



- After Market Service – onsite installation training, field service, and in-house application evaluation and analysis

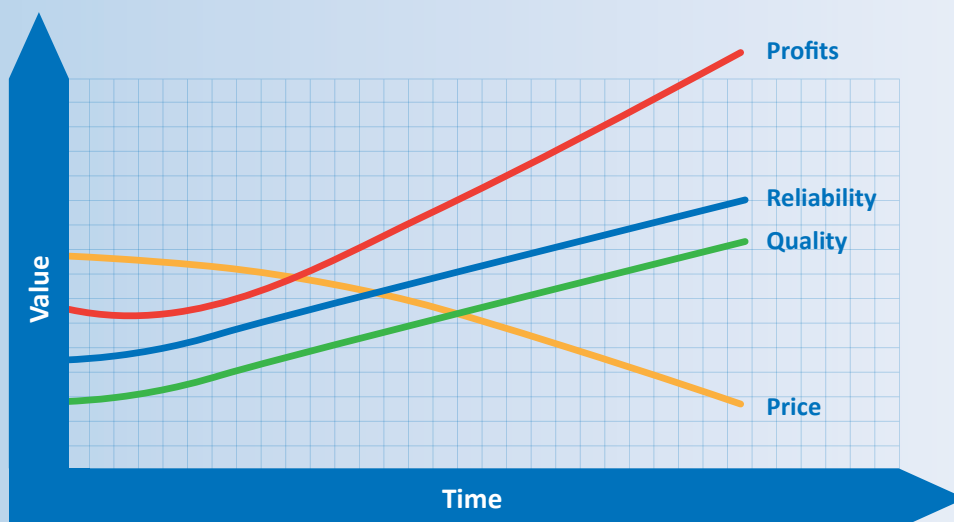


- World's Toughest Gearbox – best components and quality



- Motor Adapter and KSS Renewal Program – replace your motor adapter and keep the gearbox or reuse your stainless steel housing and replace with new components once the reducer has reached the end of its life

Asset reliability means you can depend on a STOBER gear reducer for years, increasing profits and surpassing plant efficiency targets.



Average mean time to failure for STOBER gearboxes in a 24/7 harsh environment application is 9.1 years.

We Build and Ship in One Day.

Don't wait weeks for your gear reducer.

Everything is built to order in Maysville, KY. With over \$7 million in inventory, we have the parts on the shelf to build exactly what you need.



*Assembled in
the USA*



Emergency Shipments

Broken down and losing thousands of dollars? We have 24/7 support and charge **NO** expediting fee.

Reduce Inventory and Optimize Your Storeroom



- Fast delivery means you won't wait weeks for a unit so you don't have to stock
- No more "right" and "left" reducers – Any horizontal mounting means mounting the reducer in any position where the shaft is horizontal*



- Prime lists – our application support team can determine the right mix of reducers for your plant, optimizing your storeroom

- Bushings to fit several shaft sizes

*Any horizontal mounting is dependent on size and ratio

Cradle to Grave Service and Support

Complete service and support.

STOBER is ready to assist you from design to purchase to installation.



1 Applications Support

Because every application is critical to your operation. Our engineering team will come to your factory to survey your current gear reducers. They will put together a recommendation on what STOBER units can replace your current selection.



2 Ordering Support

Experience the STOBER difference with rapid response with a live representative answering every call in 3 rings or less.



3 After Market Service

Once you complete your purchase, our experts will do installation training for your maintenance team. Learn the proper procedures to install your STOBER reducer. If you have any issues, our service group will provide field service to you. We are able to do your analysis in less than 5 days.



4 Emergency Service

24 hours a day, 7 days a week, 365 days a year. We have someone ready to assist you and can even have a unit out to you the same day.



Packages for Your Application Needs

Give us your toughest application and let us solve your problems. Our gear reducers are designed to withstand the harshest environments in the industry with stainless steel or cast iron options and three environment packages.



- **Not Suitable** for washdown applications
- Non-plated hardware
- Standard epoxy paint
- Exxon Mobil 600XP220 Mineral Oil



- Suitable for **Moderate** washdown applications
- Stainless Steel Hardware – Plastic Covers
- **Multilayered 316 Stainless Steel Epoxy Coating**
- Exxon Mobil 600XP220 Mineral Oil or Exxon Mobil SHC 630



- Suitable for **Severe** washdown applications
- Stainless Steel Hardware – Plastic Covers
- **Multilayered 316 Stainless Steel Epoxy Coating**
- **Antimicrobial clear top coat**
- Exxon Mobil SHC CIBUS 220 Food Grade Oil



- **Harshest** washdown applications
- All stainless hardware
- Stainless housing
- Exxon Mobil SHC CIBUS 220 Food Grade Oil

MGS Speed Reducers Overview

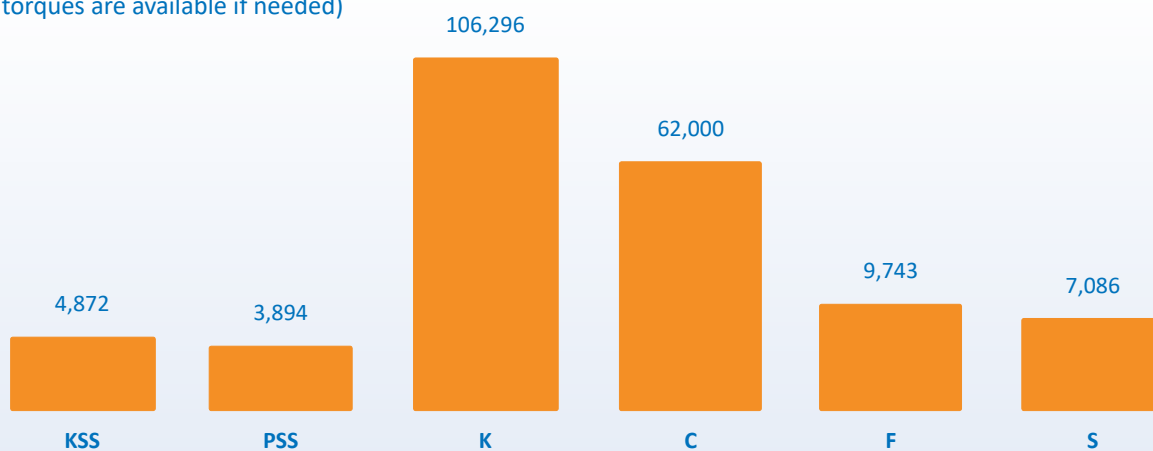


	KSS	PSS	K	C	F	S
3 year warranty	✓	✓	✓	✓	✓	✓
Housing Material	Stainless Steel	Stainless Steel	Cast Iron	Cast Iron	Cast Iron	Cast Iron
Gearing	Helical	Planetary Helical	Helical	Helical	Helical	Worm
Harsh Washdown Environment	★ ★ ★	★ ★ ★	★ ★	★ ★	★ ★	★

Performance Data

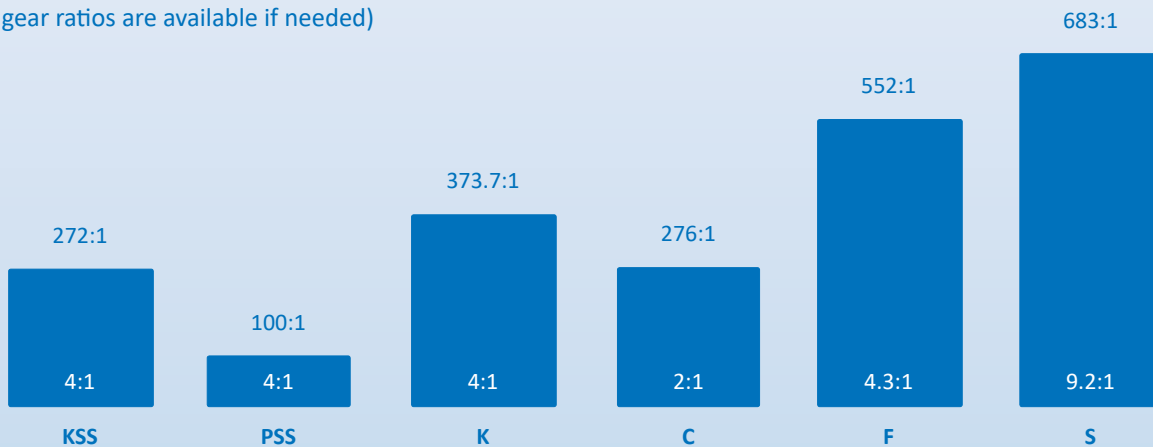
Output Torques (In. Lbs.)

(Higher torques are available if needed)



Gear Ratio Range

(Higher gear ratios are available if needed)





ServoFit, MGS, STOBBER, and ComTrac are
registered trademarks of STOBBER Drives Inc.

1781 Downing Drive, Maysville KY 41056
Phone: 606 759-5090
Web: www.stober.com
Email: sales@stober.com

Form No. 442931, Copyright Version 27
Printed in the U.S.A.