

## High Performance Cable Organizers

DEMAND INNOVATION



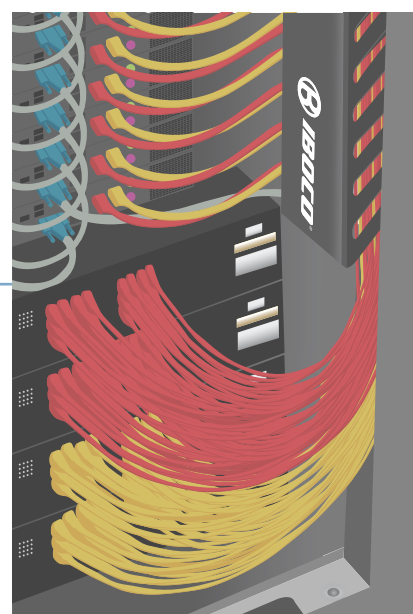
26 Northfield Ave., Edison, NJ 08837  
Tel: 732.417.0066 • [www.iboco.com](http://www.iboco.com)  
[www.facebook.com/IBOCO.US/](https://www.facebook.com/IBOCO.US/)

## ORGANIZE

IBOCO's High Performance Cable Organizers provide wire protection and organization solutions in order to maintain high levels of efficiency within telecommunication racks and data centers.

### BENEFITS

- Snap-off fingers are easily removable without a tool, in order to simplify custom cable routing. Fingers are burr free.
- Cables may be routed either on the front or back of the racks for patch and station cables.
- Duct cover is included, and easily snaps on for flush mount.
- Standard 19" rack mounting, and includes four 10/32 screws, and four 12-24 screws. All are 5/8" long.
- Single and double-sided panels available in 1U and 2U configuration.
- Product allows for all wire media routing including: fiber optics, patch cable, coaxial and security cables. Pass through hole feature allows cables to route from front to rear of panel reducing wire lengths and labor costs.
- Wire duct is made up of UL compliant PVC material. UL94 flammability rating of V-O and UL recognized continuous-use temperatures to 50°C (122°F).



## HORIZONTAL CABLE ORGANIZER



PART NUMBER	DESCRIPTION
IEWM101-1	2U Cable Management Panel, Double-Sided 3X3 Front, 2X4 Rear, 17.25" Covers Front & Rear
IEWM101-2	2U Cable Management Panel, Double-Sided 3X3 Front, 2X4 Rear, 20.125" Front Cover, 17.25" Rear Cover
IEWM102-1	1U Cable Management Panel, Double-Sided 1.5X3 Front, 1X4 Rear, 17.25" Covers Front & Rear
IEWM102-2	1U Cable Management Panel, Double-Sided 1.5X3 Front, 1X4 Rear, 20.125" Front Cover, 17.25" Rear Cover
IEWM103-1	1U Cable Management Panel, Double-Sided 1.5X2 Front, 1X4 Rear, 17.25" Covers Front & Rear
IEWM103-2	1U Cable Management Panel, Double-Sided 1.5X2 Front, 1X4 Rear, 20.125" Front Cover, 17.25" Rear Cover
IEWM104-1	1U Cable Management Panel, 1.5X2, Single-Sided, 17.25" Cover
IEWM104-2	1U Cable Management Panel, 1.5X2, Single-Sided, 20.125" Cover
IEWM105-1	1U Cable Management Panel, 1.5X3, Single-Sided, 17.25" Cover
IEWM105-2	1U Cable Management Panel, 1.5X3, Single-Sided, 20.125" Cover
IEWM106-1	2U Cable Management Panel, 3X3, Single-Sided, 17.25" Cover
IEWM106-2	2U Cable Management Panel, 3X3, Single-Sided, 20.125" Cover

## VERTICAL CABLE ORGANIZER



PART NUMBER	DESCRIPTION
IEWM201-1	4X5X35" Long, Double-Sided, Side Mount w/Covers
IEWM202-1	4X5X35" Long, Single-Sided, Side Mount w/Cover
IEWM203-1	4X5X35" Long, Double-Sided, Center Mount w/Covers
IEWM204-1	4X5X35" Long, Single-Sided, Center Mount w/Cover
IEWM301-1	4X5X78" Long, Double-Sided, Side Mount w/Covers
IEWM302-1	4X5X78" Long, Single-Sided, Side Mount w/Cover
IEWM303-1	4X5X78" Long, Double-Sided, Center Mount w/Covers
IEWM304-1	4X5X78" Long, Single-Sided, Center Mount w/Cover
ITELWM-EXTBRK	Wire Management Extension Bracket (19-23" extension)